

The F921[®] aboveground storage tank is manufactured with a double-wall steel design.

Standard

features

include

built-in,

testable,

impermeable

secondary

containment and

interstitial monitoring

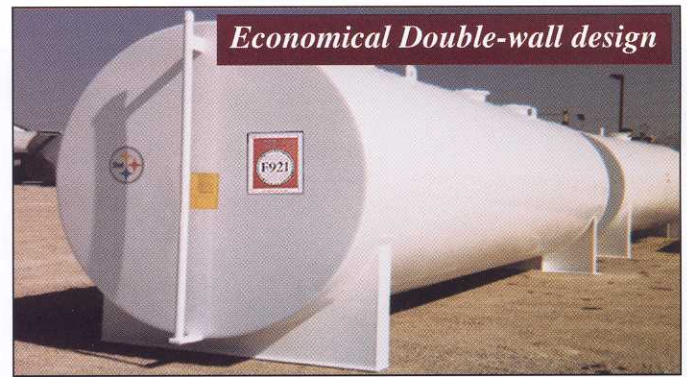
capability. The F921[®]

delivers uncompromising

performance,

reliability, service

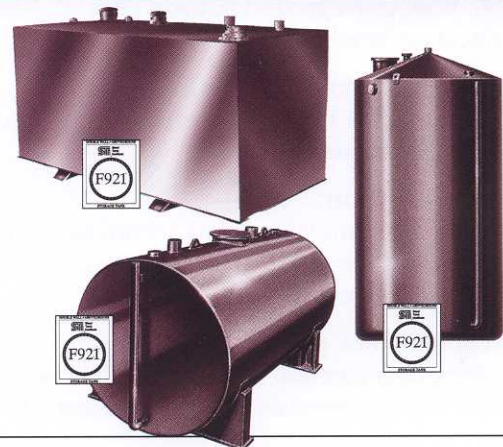
and economy.



Economical Double-wall design

- F921[®] secondary containment can be tightness tested on site with standard testing procedures
- Horizontal, vertical and rectangular designs available
- Double-wall design offers integral, impermeable secondary containment to meet EPA SPCC requirements
- Interstitial leak detection capability
- Primary storage tank and secondary containment compatible with a wide range of fuels and chemicals
- Meets UL 142, ULC-S630, ULC-S601, and ULC/ORD-C142.18
- Built to nationally-recognized STI standards with strict third-party quality control inspection program
- New! UL listed supports available to raise vertical tank bottoms off the ground.

Rectangular, Vertical, or Horizontal - with a variety of options!

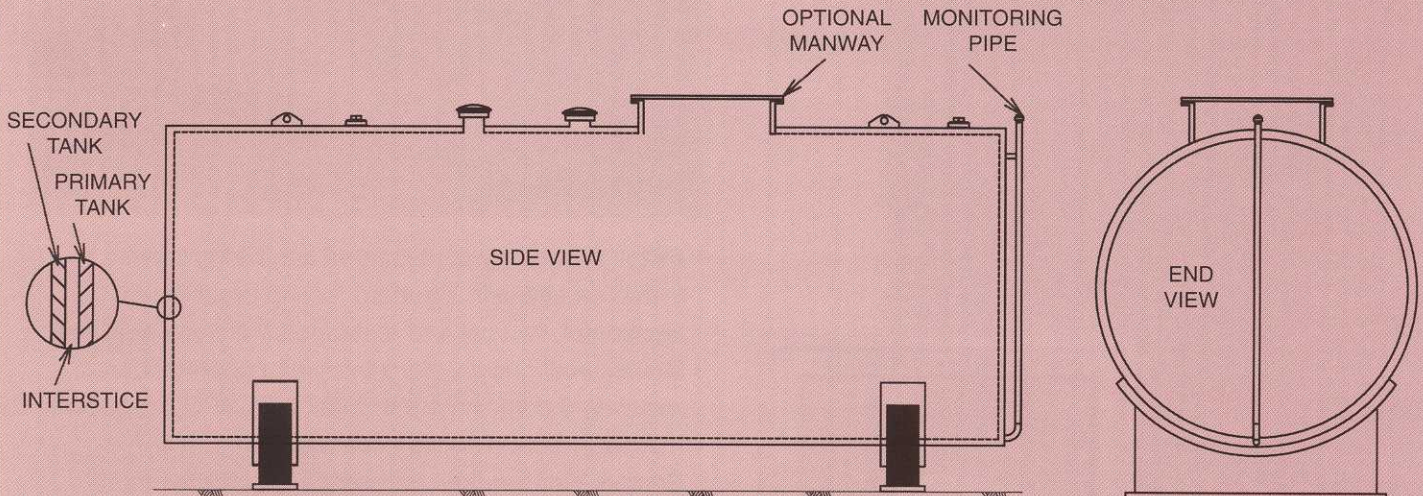


- Customized compartments can be provided for cost-effective multi-product storage
- Capacities up to 50,000 gallons
- Variety of saddle and skid designs available
- Available from a large network of manufacturers

The F921[®] is available from an extensive group of STI fabricators who participate in the Steel Tank Institute's Quality Assurance Program. Under the program, independent quality control inspectors make unannounced visits to STI members, ensuring fabrication to the highest possible standards.



F921[®] Cylindrical Double-Wall Aboveground Tanks



- Carries Steel Tank Institute F921[®] and UL 142 label
- 300° or 360° outer wall for secondary containment available
- Variety of UL approved skid and saddle supports available
- Capacity ranges: up to 50,000 gallons
- Easily relocated

F921[®] Guideline Specification

A) General

1. Provide F921[®] double-wall steel aboveground storage tanks.

B) Labeling

1. Tanks shall bear the Steel Tank Institute F921[®] Double-Wall Aboveground Storage Tank identification label.
2. Aboveground tanks shall bear Underwriters Laboratories UL 142 label for primary tank and secondary containment.

C) Product Description

1. Tanks shall be manufactured in accordance with Steel Tank Institute F921 standard for double-wall aboveground storage tanks.
2. Aboveground tank primary and secondary containment (inner and outer walls) shall be manufactured in accordance with and listed for

Underwriters Laboratories UL 142 Standard for Steel Aboveground Tanks for Flammable and Combustible Liquids.

3. Tank shall be double-wall with a steel inner wall for primary containment and provide integral secondary containment by an impervious steel outer wall.
4. Integral secondary containment shall be testable and shall provide access for interstitial leak detection monitoring.
5. UL 142 listed supports shall be used for all horizontal, rectangular and vertical double-wall tanks.

D) Manufacturer

1. Manufacturer shall be a licensed member company of Steel Tank Institute and subject to Steel Tank Institute's Quality Assurance program.



570 Oakwood Road
Lake Zurich, IL 60047
847/438-8265
Fax 847/438-8766
website: www.steeltank.com

STI Technology Guide Specification Software

- Complete AST/UST Project Specs in CSI Format
- Easy to use, interactive Windows-based CD-ROM

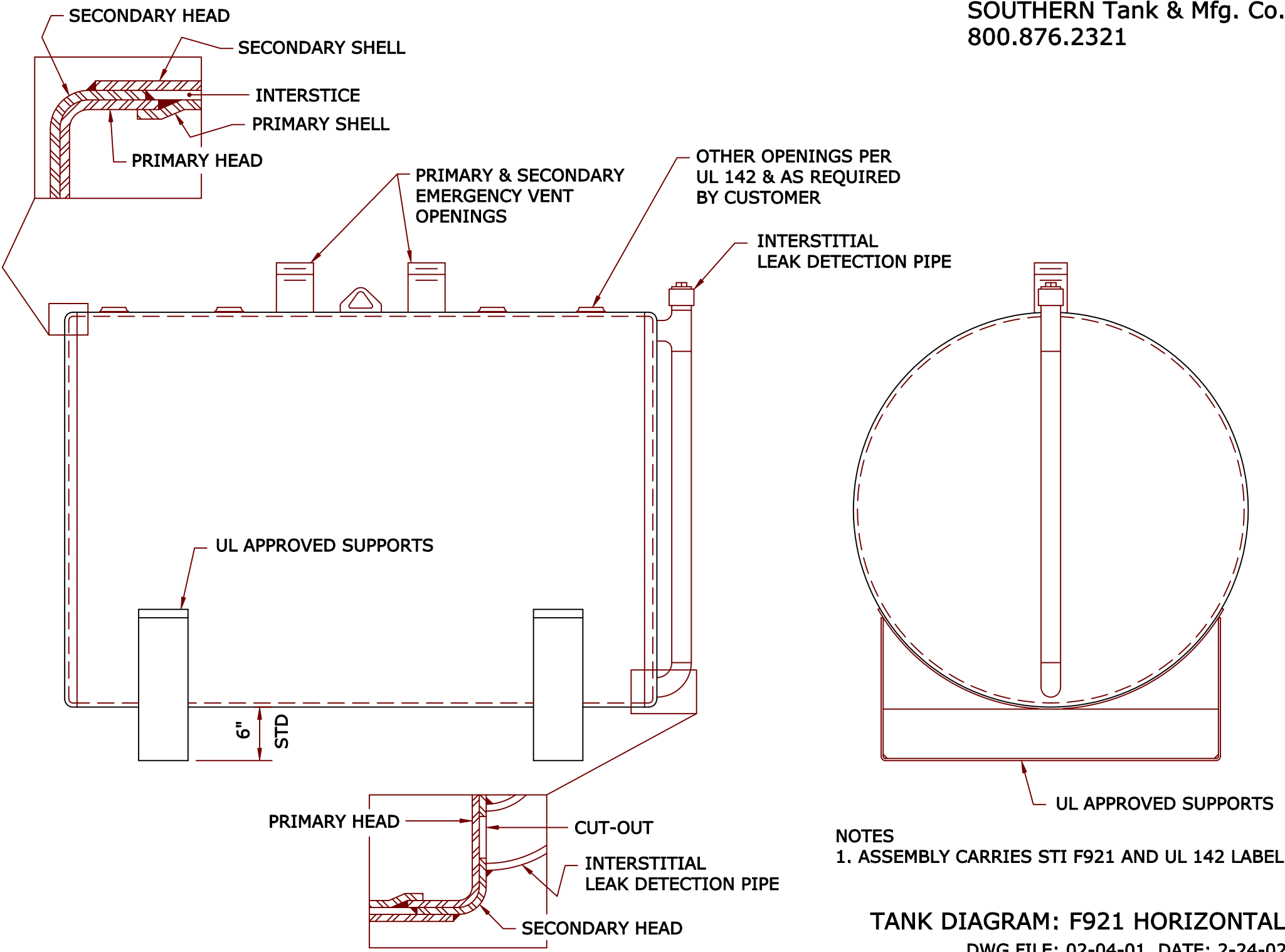


Use the STI Technology Guide online for your next F921 specification!
All you need in tanks.



Aboveground • Underground • Indoor • Outdoor • Single Wall • Double Wall • Compartmentalized





NOTES
1. ASSEMBLY CARRIES STI F921 AND UL 142 LABEL

TANK DIAGRAM: F921 HORIZONTAL
DWG FILE: 02-04-01 DATE: 2-24-02

