

ALL MATERIAL IS 304L SS
 INCLUDE (1) 150# FF GASKET, NEOPRENE
 (4) 5/8-11 X 3" HEX BOLTS & (4)
 5/8-11 HEX NUTS

NOTES

- TANK TO BE BUILT, TESTED, AND LABELED IN ACCORDANCE WITH U.L. 142 AND STI F921 STANDARDS.
- PRIMARY TANK TO BE FABRICATED FROM TYPE 304L STAINLESS STEEL, 5/16" HEADS, 3/16" SHELL. SECONDARY TANK TO BE FABRICATED FROM CARBON STEEL, 3/16" HEADS, 10 GAUGE SHELL.
- ALL OPENINGS ARE PRIMARY UNLESS NOTED OTHERWISE.
- TANK EXTERIOR TO BE ABRASIVE SANDBLASTED PER SSPC-SP6/NACE #3 SPECIFICATIONS, THEN ONE COAT OF HSC SERIES III, HIGH-SOLIDS, HIGH-GLOSS DTM ALIPHATIC POLYURETHANE, WHITE, 3-5 MILS DFT.
- APPROXIMATE WEIGHT OF TANK IS 12,830 LBS.

IMPORTANT NOTE

IF POSSIBLE, REVIEW THIS DRAWING WITH YOUR CONTRACTOR. OF SPECIFIC IMPORTANCE, DOES THE TANK HAVE THE NECESSARY FITTINGS FOR THE EQUIPMENT YOU PLAN TO INSTALL

CUSTOMER APPROVAL REQUIRED

- MAKE NOTED CHANGES AND RE-SUBMIT
- APPROVED WITH CHANGES NOTED
- APPROVED AS DRAWN

SIGNATURE _____ DATE _____



SOUTHERN
 Tank & Mfg Co
 800-876-2321

FOR
 SUSTAINABLE GROWTH VENTURES LLC
 MILAN, IL

DRAWN BY
 D. HIGDON

CHECKED BY

CUSTOMER ORDER NO.

QUANTITY
 ONE

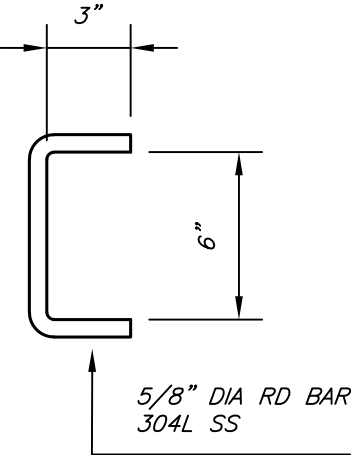
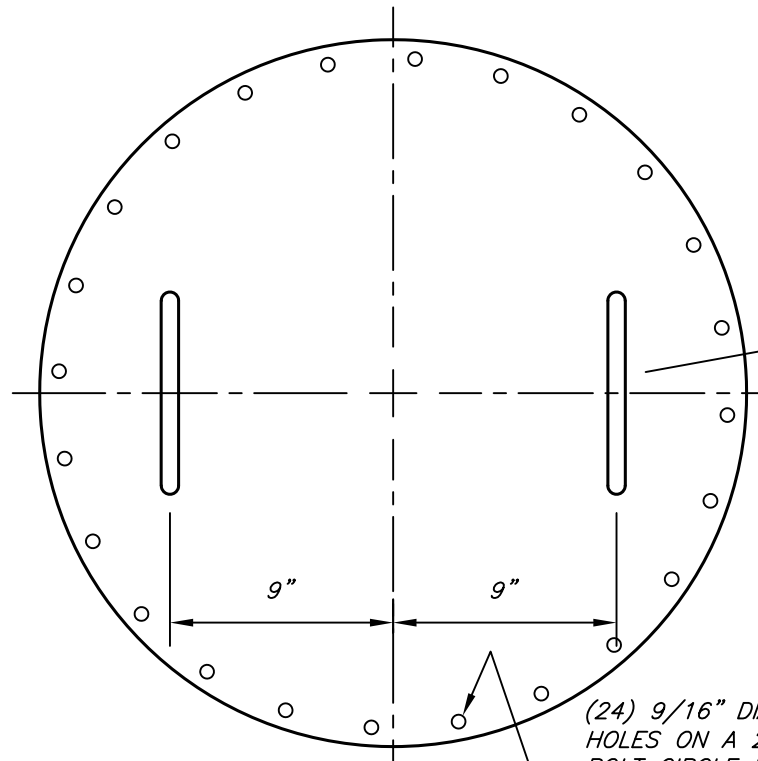
DATE
 7-13-21

DRAWING DESCRIPTION
 GENERAL ARRANGEMENT
 10,000 GALLON HORIZONTAL DOUBLE WALL

DRAWING FILE
 93086-10000

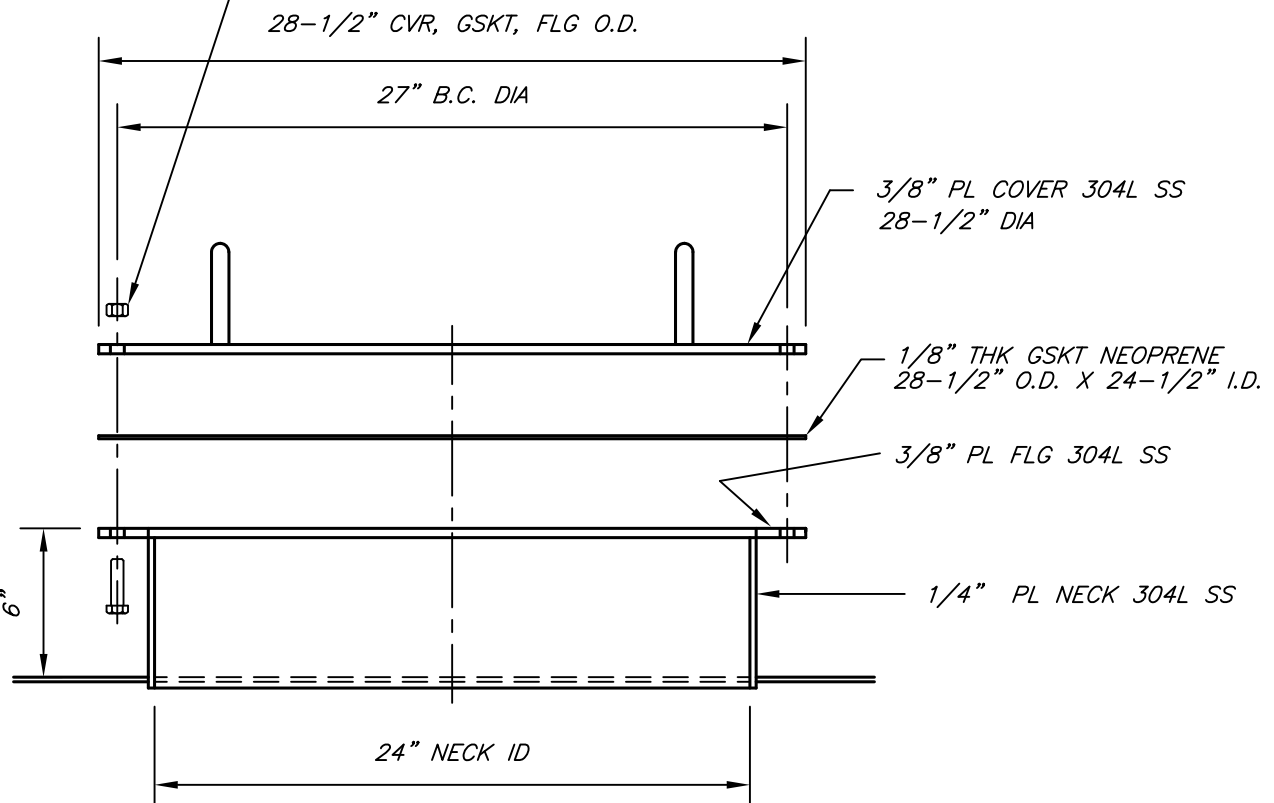
SHEET
 1 OF 2

REVISION
 0



(24) 9/16" DIA BOLT HOLES ON A 27" BOLT CIRCLE DIA

(24) 1/2"-13 X 1 1/2" HEX BOLTS & (24) 1/2"-13 HEX NUTS 18-8 SS



28-1/2" CVR, GSKT, FLG O.D.

27" B.C. DIA

3/8" PL COVER 304L SS
28-1/2" DIA

1/8" THK GSKT NEOPRENE
28-1/2" O.D. X 24-1/2" I.D.

3/8" PL FLG 304L SS

1/4" PL NECK 304L SS

24" NECK ID

IMPORTANT NOTE

IF POSSIBLE, REVIEW THIS DRAWING WITH YOUR CONTRACTOR. OF SPECIFIC IMPORTANCE, DOES THE TANK HAVE THE NECESSARY FITTINGS FOR THE EQUIPMENT YOU PLAN TO INSTALL

CUSTOMER APPROVAL REQUIRED

- MAKE NOTED CHANGES AND RE-SUBMIT
- APPROVED WITH CHANGES NOTED
- APPROVED AS DRAWN

SIGNATURE _____ DATE _____



FOR
SUSTAINABLE GROWTH VENTURES LLC
MILAN, IL

DRAWN BY
D. HIGDON

CHECKED BY

CUSTOMER ORDER NO.

QUANTITY
ONE

DATE
7-13-21

DRAWING DESCRIPTION
GENERAL ARRANGEMENT
MANWAY

DRAWING FILE
93086-2

SHEET
2 OF 2

REVISION

